



# ***Rapid Ship***

*Fast Shipment of Stock, Modified  
Stock and Build to Order Fans*



**Quality • Value • Commitment**

***Fan Solutions...FAST!***



AIR MOVEMENT

## Over 85 Years of Innovation, Quality, and Reliability

Since 1927 when Hartzell first engineered the propeller fan, the Hartzell name has been synonymous with quality air moving equipment. Through the years, Hartzell has continually been recognized as having one of the broadest product and service lines in the air moving industry.

With production and stocking facilities in Ohio and Indiana, Hartzell serves customers worldwide via its Manufacturers Representative network. The Research and Development Center in Piqua is an accredited Air Movement and Control Association (AMCA) International Lab where all testing is done in accordance with AMCA standards.

Hartzell is the industrial ventilation expert producing high quality, efficient, and innovative ventilation solutions for a wide variety of industries and applications. Products include fans for general and process ventilation including a complete line of axial and centrifugal fans and blowers, an extensive fiberglass product line, direct gas fired products, as well as a full range of options and accessories.



# Rapid Ship



## 48 Hours or Less

In stock & direct drive models ship in **48 hours** as catalogued:

- HartKool®, Series HKA
- Panel Fans, Series 02SG
- Upblast Roof Vents, Series 61-G
- Duct Fans, Series 38
- Marine Duty Duct Axial, Series 44-M
- Heating Equipment, Series 78V & 79
- Utility Fans, Series 22F



## 5 Days or Less

In stock belt drive models ship in **5 days** or less as catalogued (with available accessories mounted or shipped loose but a modification fee may apply):

- Centrifugal Fans, Series 03P
- FRP Centrifugal Fans, Series 41P
- Vaneaxial Fans, Series 54G
- FRP Duct Axial Fans, Series 34 & 35
- Roof Ventilator, Series 16I
- Upblast Roof Vents, Series 69
- Duct & Duct Axial Fans, Series 31 & 46

## Table of Contents

### General Ventilation 4-8

Panel Fans	4
Utility Fans	5
HartKool®	5
Roof Ventilators	6-8

### Process Ventilation 9-13

Duct Fan	9
Duct Axial® Fan	10
Vaneaxial Blower	11
Fixed Pitch Duct Fan	12
Backward Curved Centrifugal Fan	13

### Corrosion Resistant 14-16

Fiberglass Duct Fan	14
Fiberglass Duct Axial Fans	15
Fiberglass Backward Curved Centrifugal	16

### Heating Equipment 17

Gas Fired Make Up Air	17
Door Heaters	17

### Specialty Products 18

Marine Duty Duct Axial	18
------------------------	----

### Accessories 19

Panel Fans and Wall Ventilators	19
HartKool® Fans	19
Centrifugal Fans	20
Roof Ventilators & Duct Fans	20

## How to Order



For a Rapid Ship quotation or to place your Rapid Ship order, please call your local Hartzell representative or email [HRS@hartzell.com](mailto:HRS@hartzell.com).



To find your local Hartzell representative, please visit our Website at [www.hartzellairmovement.com](http://www.hartzellairmovement.com) or call us at **800.336.FANS (3267)**.



Hartzell Air Movement will ship your Rapid Ship order and charge it to your credit card or your open, approved Hartzell Air Movement account. MasterCard and Visa are gladly accepted.



MEMBER





# Now you can select your own fan with **Hartzell-FLOW®** Software!



## CREATE A CUSTOM 3D MODEL IN SECONDS!

- Delivers quick response time.
- Generates 2D drawings & 3D fan models.
- Provides access to curves & specifications on AMCA tested & certified products.
- BIM model integration

*Database includes a multitude of fans to fit hundreds of applications!*

Get started at  
[www.hartzellflow.com](http://www.hartzellflow.com)





## Panel Fans

### Standard Panel Fan (Direct Drive) – Series 02SG

- In stock models ship in 48 hours or less.
- 5 day shipment if accessories required.
- Exclusive Air-Seal Ring design.
- Adjustable pitch propeller on 24" to 36" fans; one-piece aluminum, airfoil type-2 bladed propeller on 40" to 48" fans.
- Totally enclosed fan cooled motor.
- See page 19 for accessories available from stock.
- Stocked as "G" (General Industrial) Duty Construction.
- For complete Certified Ratings Data, go to [www.hartzellairmovement.com](http://www.hartzellairmovement.com).



Hartzell Air Movement certifies that the Series 02S, Direct Drive Panel Fan, Standard Flow size 40 and above, shown herein is licensed to bear the AMCA Seal. The ratings shown are based on tests and procedures performed in accordance with AMCA Publication 211 and comply with the requirements of the Certified Ratings Program.

The AMCA certified ratings seal applies to air performance ratings only.



Hartzell Air Movement certifies that Panel Fans, Series 02S, shown herein, is authorized to bear CE Marking in accordance with Machinery Safety Directive 98/37/EC of the European Union. Reference Technical File E.S. 13.2.2.

### Series 02SG

#### Rating Table – Series 02SG

Size	Model	Motor		Phase	Peak Fan BHP*	CFM @ 0" Static Pressure	Approximate dBA @ 5'	Approximate Shipping Wt.
		HP	RPM					
24	S02SG-243AL250STFCH3	1	1750	3	0.980	8058	77	97
28	S02SG-283AL265STFCH4	1	1160	3	1.010	10030	70	137
36	S02SG-363AL265STFCK4	3	1160	3	2.648	20781	78	298
40	S02SG-402NA---STFCJ4	2	1160	3	2.163	22625	83	253
48	S02SG-482NB---STFCK4	3	1160	3	2.996	31325	82	328

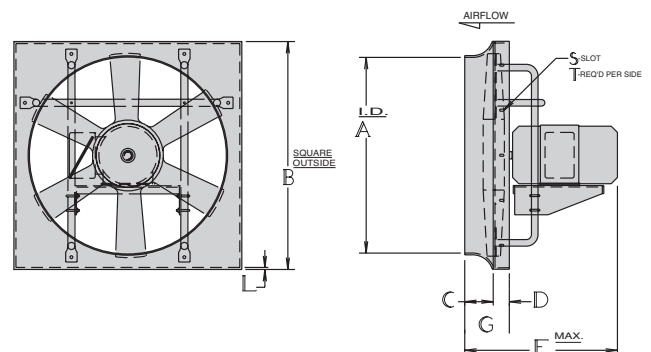
- Performance certified is for Installation Type B: Free Inlet, Ducted Outlet.
- Speed (RPM) shown is nominal. Performance is based on actual speed of test.
- Performance ratings do not include the effects of appurtenances (accessories).

- The dBA values shown above are based on Hartzell laboratory tests and are not indicative of actual installation values.

#### Principal Dimensions – Series 02SG

Size	A	B	C	D	F (Max)	G	L
24	24 <sup>3/16</sup>	28	3 <sup>1/2</sup>	2	14 <sup>3/4</sup>	5 <sup>1/2</sup>	14 GA.
28	28 <sup>3/16</sup>	33	3 <sup>1/2</sup>	2 <sup>1/2</sup>	20 <sup>1/2</sup>	6	14 GA.
36	36 <sup>3/16</sup>	42	4	2 <sup>3/4</sup>	22 <sup>1/2</sup>	6 <sup>3/4</sup>	14 GA.
40	40 <sup>3/16</sup>	46	4 <sup>3/8</sup>	2 <sup>3/4</sup>	22 <sup>3/4</sup>	7 <sup>1/8</sup>	14 GA.
48	48 <sup>3/16</sup>	54	4 <sup>3/4</sup>	2 <sup>3/4</sup>	25 <sup>1/2</sup>	7 <sup>1/2</sup>	14 GA.

NOTE: Dimensions and specifications are subject to change. Certified prints are available.



# Utility Fans and HartKool®

## Utility Fans – Series 22F

- In stock models ship in 48 hours or less.
- Compact design; versatile; durable construction.
- Requires limited space.
- Tilt-head type can be adjusted up or down.
- Totally enclosed fan cooled motors.
- Series 22F has drilled flat base for wall, column, or ceiling mounting.
- For complete information on Utility Fans, go to [www.hartzellairmovement.com](http://www.hartzellairmovement.com).

### Rating Table – Series 22F

Size	Model	Motor		Phase	CFM @ 0" Static Pressure	Approximate dBA @ 5'
		HP	RPM			
36	S22F---363-L---STFCJ4	2	1160	3	18865	85

NOTE: The dBA values shown above are based on Hartzell laboratory tests and are not indicative of actual installation values.

### Overall Dimensions – Series 22F

	Fan Size	Height	Width	Depth	Ship Wgt. #
Series 22F	36	43 <sup>3</sup> / <sub>4</sub>	47	21	285

Dimensions and specifications are subject to change. Certified prints are available.



Series 22F

## Cooling Fans – Series HKA

- In stock models and in stock accessories ship in 48 hours or less.
- Polyethylene venturi orifice ring.
- Efficient cast aluminum, airfoil propeller.
- Front and rear, OSHA compliant integral guarding.
- Durable, high quality finish.
- Quiet operation.
- The motor is totally enclosed air over, 115/230/60/1 voltage with 6' cord and grounded plug.
- Colors: 18" and 24" available in black; 32" and 36" available in yellow.
- See page 19 for accessories available from stock.
- For complete information on HartKool® fans, go to [www.hartzellairmovement.com](http://www.hartzellairmovement.com).

### Rating Table – Series HKA

Size	Model	Motor		Amps @ 115/60/1	CFM @ 0" Static Pressure	dBA @ 5'
		HP	RPM			
18	SHKAB-182NB---PLYAEC	1/3	1700	3.0	4236	71
24	SHKAB-242NB---PLYAFC	1/2	1700	7.0	8480	77
32	SHKAY-322NA---PLYAFD	1/2	1100	6.0	11187	71
36	SHKAY-362NC---PLYAFD	1/2	1100	6.0	13450	74



Series HKA

### Principal Dimensions – Series HKA

Fan Size	Length	Width	Depth	Ship Wgt. #
18	22 <sup>3</sup> / <sub>8</sub>	22 <sup>3</sup> / <sub>8</sub>	11 <sup>1</sup> / <sub>2</sub>	58 lbs
24	29	29	12 <sup>1</sup> / <sub>8</sub>	66 lbs
32	37	37	13 <sup>1</sup> / <sub>8</sub>	86 lbs
36	42 <sup>3</sup> / <sub>8</sub>	42 <sup>3</sup> / <sub>8</sub>	14 <sup>1</sup> / <sub>8</sub>	100 lbs
Mounting Hook - Small (18" & 24")	12	2	3	2 lbs
Mounting Hook - Large (32" & 36")	23	2	3	3 lbs
Wall/Ceiling Bracket	24	1 <sup>1</sup> / <sub>2</sub>	16	12 lbs
Wheeled Cart*	42	24	29	45 lbs
Low Pressure Mist Kit				1 lbs

\*Ships unassembled

# Upblast Roof Vent (Direct Drive)



Series 61-G

- In stock models ship in 48 hours or less.
- 5 day shipment if accessories required.
- Painted hot rolled steel fan frames. Painted galvanized steel windband and panel. Galvanized damper lids.
- Adjustable pitch propeller on 24" to 36" fans; one-piece cast aluminum airfoil type 2-bladed propellers on 40" to 48" fans.
- Motors are totally enclosed fan cooled.
- Pre-fab roof curb available. Galvanized construction, 8" high, for flat roof (direct ship with suppliers delivery schedule).
- See page 20 for accessories available from stock.
- Stocked as "G" (General Industrial) Duty Construction.
- For complete information on Roof Vents, go to [www.hartzellairmovement.com](http://www.hartzellairmovement.com).

Rating Table – Series 61-G

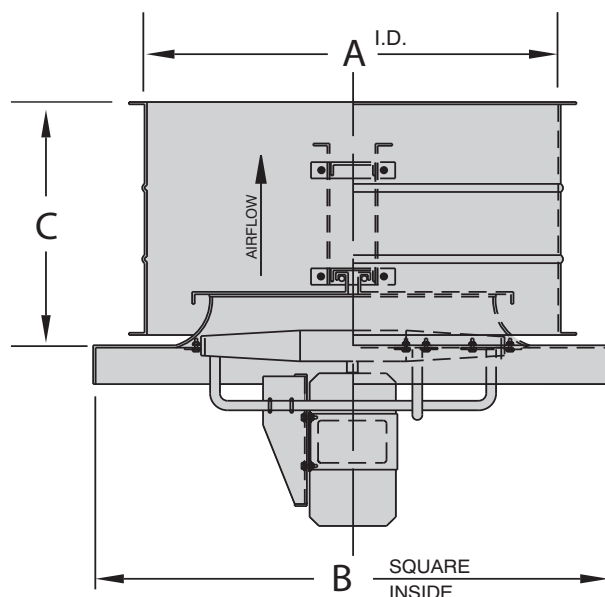
Size	Model	Motor		Phase	Peak Fan BHP*	CFM @ 0" Static Pressure	Approximate dBA @ 5'	Approximate Shipping Weight
		HP	RPM					
24	S61-G-243AL320STFCI3	1½	1750	3	1.46	8391	79	203
30	S61-G-304AL325STFCJ4	2	1160	3	1.99	11769	76	255
36	S61-G-363AL265STFCK4	3	1160	3	2.96	18793	78	386
40	S61-G-402NA---STFCJ4	2	1160	3	2.25	20630	82	350
42	S61-G-422NA---STFCK4	3	1160	3	2.98	24764	85	425
48	S61-G-482NA---STFCL4	5	1160	3	5.37	34350	85	648

NOTE: The dBA values shown above are based on Hartzell laboratory tests and are not indicative of actual installation values.

Principal Dimensions – Series 61-G

Fan Size	24	30	36	40	42	48
A	30	36	44	48	50	56
B	36	42	48	50	54	60
C	20%	20%	26%	26%	26%	38%

NOTE: Dimensions and specifications are subject to change.  
Certified prints are available.





# Upblast Roof Vent (Belt Drive)



**Series 69**

- In stock models ship in 5 days or less..
- Exterior motor mounting arrangement places the motor and belts out of air stream, making the unit ideal for handling tempered air, smoke, dust and fumes.
- Fan is heavy gauge, painted hot rolled steel, bolted to painted galvanized panel. Stack cap and windband are painted galvanized steel. Galvanized damper lids.
- Cast aluminum, 6-blade, Type W, airfoil propeller.
- Motors are totally enclosed fan cooled. All motors are 1750 RPM.
- Lube tubes are standard with compatible relubricable motor.
- Weather cover, stack cap, and curb panel are standard.
- Units are shipped assembled and skid mounted.
- Pre-fab roof curb available. Galvanized construction, 8" high, for flat roof (direct ship with suppliers delivery schedule). See page 20.
- For complete information on Certified Ratings Data, go to [www.hartzellairmovement.com](http://www.hartzellairmovement.com).



Hartzell Air Movement certifies that the Series 69, Belt Drive Upblast Roof Ventilator shown herein is licensed to bear the AMCA Seal for air and sound. The ratings shown are based on tests and procedures performed in accordance with AMCA Publication 211 and Publication 311 and comply with the requirements of the AMCA Certified Ratings Program.

Sound performance data is available upon request. Please contact the factory and ask for Engineering Publication #SD-157.

## Rating Table – Series 69

Size	Model	Motor		Phase	Fan RPM Range	CFM @ 0" Static Pressure	Approximate dBA @ 5'	Shipping Weight Less Motor and Accessories
		HP	RPM					
24	S69---246WB---ST---	.5 - 3	1750	3	850 - 2100	4400 - 10400	68 - 92	413
30	S69---306-W---ST---	1 - 7	1750	3	700 - 1550	7400 - 16200	69 - 90	488
36	S69---366-W---ST---	1 - 7.5	1750	3	500 - 1450	9200 - 22600	66 - 91	644
48	S69---486-W---ST---	2 - 7.5	1750	3	500 - 1150	19200 - 38500	76 - 97	1166

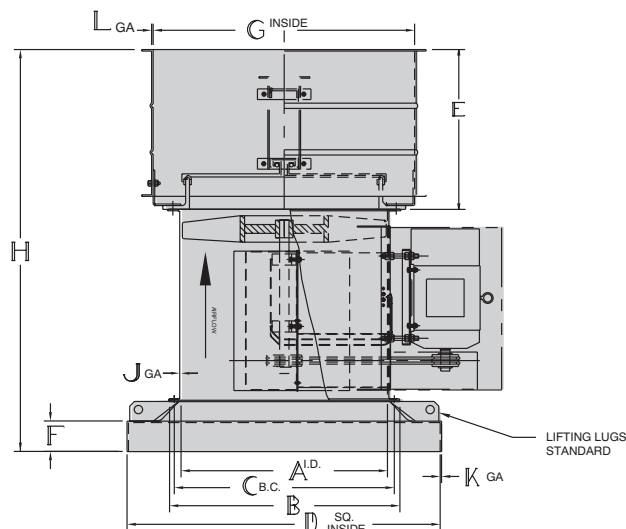
- Performance certified is for Installation Type A: Free Inlet, Free Outlet.
- Power ratings (BHP) include transmission losses.
- Performance ratings do not include the effects of appurtenances (accessories).

- CFM shown is net flow at the inlet and includes static pressure loss through ventilator.
- The dBA values shown above are based on Hartzell laboratory tests and are not indicative of actual installation values.

## Principal Dimensions – Series 69

Fan Size	24	30	36	48
A	24 <sup>7</sup> / <sub>8</sub>	30 <sup>7</sup> / <sub>8</sub>	37	49 <sup>7</sup> / <sub>8</sub>
B	29 <sup>1</sup> / <sub>8</sub>	35 <sup>1</sup> / <sub>8</sub>	41 <sup>3</sup> / <sub>8</sub>	53 <sup>1</sup> / <sub>2</sub>
C	26 <sup>7</sup> / <sub>8</sub>	33	39	51 <sup>5</sup> / <sub>8</sub>
D	36	42	48	60
E	20 <sup>1</sup> / <sub>2</sub>	20 <sup>1</sup> / <sub>2</sub>	26 <sup>1</sup> / <sub>2</sub>	38 <sup>1</sup> / <sub>2</sub>
F	2 <sup>3</sup> / <sub>4</sub>	2 <sup>3</sup> / <sub>4</sub>	2 <sup>3</sup> / <sub>4</sub>	3 <sup>3</sup> / <sub>4</sub>
G	30	36	44	56
H	57 <sup>13</sup> / <sub>16</sub>	61 <sup>5</sup> / <sub>16</sub>	67 <sup>5</sup> / <sub>16</sub>	89 <sup>7</sup> / <sub>8</sub>
J	10	10	10	10
K	14	14	14	14
L	20	20	20	16

NOTE: Dimensions and specifications are subject to change. Certified prints are available.





# Belt Drive Hooded Roof Ventilator



Series 16I

- In stock models ship in 5 days or less.
- Supply units are for intake flow. Contact factory for availability of exhaust flow units.
- Welded reinforced painted galvanized steel housings.
- Cast aluminum, airfoil type, 3-blade, lo-noise propellers.
- Motors are totally enclosed fan cooled.
- Motor-operated damper and access door are standard.
- Lifting eyes are standard.
- Bird screens are standard.
- Filter rack is standard. Accommodates field or factory installation of filters.
- Pre-fab roof curb available. Galvanized construction, 8" high, for flat roof. See page 20.
- Stocked as "G" (General Industrial) Duty Construction.
- For complete information on Certified Ratings Data, go to [www.hartzellairmovement.com](http://www.hartzellairmovement.com).

Rating Table – Series 16I

Size	Model	Motor		Phase	Fan RPM Range	CFM @ Static Pressure			Approximate dBA @ 5'	Ship. Wgt. Less Motor and Acc.
		HP	RPM			0"	1/4"	1/2"		
36	S16IG-363-L---ST----	.5 - 2	1750	3	650 - 1060	10000 - 16250	4000 - 14000	500 - 11250	66 - 78	448
48	S16IG-483-L---ST----	1 - 5	1750	3	525 - 900	19000 - 32400	10000 - 29000	2600 - 26000	68 - 82	947

- Performance certified is for Installation Type A: Free Inlet, Free Outlet.
- Power ratings (BHP) include transmission losses.
- Performance ratings do not include the effects of appurtenances (accessories).

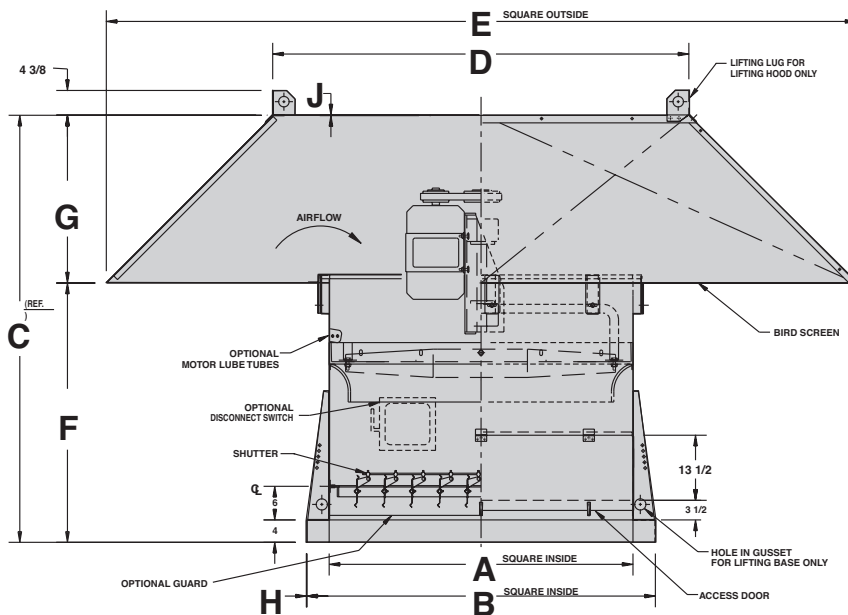
- CFM shown is net flow at the inlet and includes static pressure loss through ventilator.
- The dBA values shown above are based on Hartzell laboratory tests and are not indicative of actual installation values.

Principal Dimensions – Series 16I

Fan Size	36	48
A	42 1/4	54 1/4
B	50 1/4	62 1/4
C	57 1/8	72 1/2
D	50 5/8	67 5/8
E	90	120
F	38 1/8	46 1/4
G	19 9/16	26 1/4
H	14	14
J	18	18

NOTE: Dimensions and specifications are subject to change.  
Certified prints are available.

NOTE: 36" unit has one-piece hood. 48" unit has a two-piece hood.



## Duct Fan (Belt Drive)



**Series 31**

- **In stock models ship in 5 days or less.**
- 6-blade "W" prop operates efficiently under pressure with low RPM and brake horsepower.
- Bearings are heavy-duty, pillow block, ball or roller type selected for minimum L-50 life of 500,000 hours for horizontal fans; and 300,000 hours for vertical fans, and include extended lubrication fittings.
- Shaft seal and slinger are standard.
- Motors are totally enclosed fan cooled and out of the airstream. All motors are 1750 RPM.
- See page 20 for accessories available from stock.
- **For complete Certified Ratings Data, go to [www.hartzellairmovement.com](http://www.hartzellairmovement.com).**



Hartzell Air Movement certifies that the Series 31, Belt Drive Duct Fan, shown herein is licensed to bear the AMCA seal for air performance. The ratings shown are based on tests and procedures performed in accordance with AMCA Publication 211 and comply with the requirements of the Certified Ratings Program.

The AMCA certified ratings seal applies to air performance ratings only.

### Rating Table – Series 31

Size	Model	Motor			Fan RPM Range	CFM @ Static Pressure			Approximate dBA @ 5'	Shipping Weight Less Motor and Accessories
		HP	RPM	Phase		0"	1/4"	1/2"		
24	S31---246WB---ST----	.5 - 3	1750	3	975 - 2150	5500 - 11800	4500 - 11400	1500 - 10900	73 - 94	231
30	S31---306-W---ST----	1 - 5	1750	3	700 - 1550	8000 - 17500	6500 - 17000	2000 - 16300	72 - 94	308
36	S31---366-W---ST----	2 - 7.5	1750	3	700 - 1450	13000 - 26900	11000 - 26000	15000 - 25000	73 - 92	385
48	S31---486-W---ST----	2 - 7.5	1750	3	500 - 975	19600 - 38000	15100 - 36000	15100 - 36000	74 - 91	677

- Performance certified is for Installation Type D: Ducted Inlet/Ducted Outlet.
- Power ratings (BHP) include transmission losses.
- Performance ratings do not include the effects of appurtenances (accessories).

- The dBA values shown above are based on Hartzell laboratory tests and are not indicative of actual installation values.
- Drives are variable pitch. RPM shown is for listed performance and can be reduced approximately 15%.

See dimensions on next page (page 10).



## Duct Axial® Fan (Belt Drive)

- In stock models ship in 5 days or less.
- One-piece, cast aluminum, 6-bladed, airfoil-type propeller provides maximum efficiency at medium static pressure ranges, with low speed and low noise characteristics.
- Bearings are heavy-duty, pillow block, ball or roller type selected for minimum L-50 life of 400,000 hours for horizontal fans; and 250,000 hours for vertical fans, and include extended lubrication fittings.
- Shaft seal and slinger are standard.
- See page 20 for accessories available from stock.
- For complete Certified Ratings Data, go to [www.hartzellairmovement.com](http://www.hartzellairmovement.com).



Hartzell Air Movement certifies that the Series 46, Belt Drive Duct Axial Fan is licensed to bear the AMCA Seal. The ratings shown are based on tests and procedures performed in accordance with AMCA Publication 211 and comply with the requirements of the Certified Ratings Program.

The AMCA certified ratings seal applies to air performance ratings only.



**Series 46 (DA Prop)**

### Rating Table – Series 46

Size	Model	Motor		Phase	Fan RPM Range	CFM @ Static Pressure			Approximate dBA @ 5'	Shipping Weight Less Motor and Accessories
		HP	RPM			0"	1/4"	1/2"		
12	S46---126DA---ST---	.5 - 1.5	1750	3	1625 - 3650	1000 - 2200	600 - 2100	270 - 1980	66 - 88	84
12	S46---126DA---ST---	1.5 - 2	3450	3	3225 - 4425	2050 - 2570	1900 - 2490	1800 - 2380	86 - 91	84
16	S46---166DA---ST---	.5 - 2	1750	3	1350 - 2975	2240 - 4950	1870 - 4800	880 - 4700	73 - 95	119
16	S46---166DA---ST---	2 - 3	1750	3	2425 - 3725	4050 - 6200	2850 - 6100	3700 - 6000	89 - 101	119
18	S46---186DA---ST---	.33 - 2	3450	3	1100 - 2875	2400 - 6240	1800 - 6050	640 - 5800	71 - 98	136
24	S46---246DA---ST---	.5 - 5	1750	3	750 - 2325	3800 - 11400	2650 - 10900	700 - 10500	65 - 96	231
28	S46---286DA---ST---	5 - 15	1750	3	1175 - 2264	9700 - 18400	8900 - 18100	8100 - 17900	81 - 98	265
36	S46---366DA---ST---	7.5 - 20	1750	3	1000 - 1650	16900 - 27800	15900 - 27500	14800 - 26200	86 - 99	385

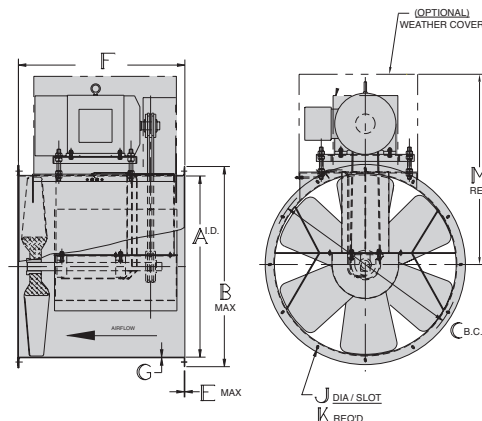
- Performance certified is for Installation Type D: Ducted Inlet/Ducted Outlet.
- Power ratings (BHP) include transmission losses.
- Performance ratings do not include the effects of appurtenances (accessories).

- The dBA values shown above are based on Hartzell laboratory tests and are not indicative of actual installation values.
- Drives are variable pitch. RPM shown is for listed performance.

### Principal Dimensions – Series 31 & Series 46

Fan Size	12	16	18	24	28	30	36	48
A	12 <sup>7</sup> / <sub>8</sub>	16 <sup>7</sup> / <sub>8</sub>	18 <sup>7</sup> / <sub>8</sub>	24 <sup>7</sup> / <sub>8</sub>	28 <sup>7</sup> / <sub>8</sub>	30 <sup>7</sup> / <sub>8</sub>	37	49 <sup>1</sup> / <sub>8</sub>
Max B	15 <sup>11</sup> / <sub>16</sub>	19 <sup>5</sup> / <sub>8</sub>	21 <sup>5</sup> / <sub>8</sub>	29 <sup>1</sup> / <sub>4</sub>	33 <sup>3</sup> / <sub>4</sub>	34 <sup>3</sup> / <sub>8</sub>	41 <sup>3</sup> / <sub>8</sub>	53 <sup>1</sup> / <sub>2</sub>
C	14 <sup>5</sup> / <sub>8</sub>	18 <sup>5</sup> / <sub>8</sub>	20 <sup>5</sup> / <sub>8</sub>	26 <sup>7</sup> / <sub>8</sub>	30 <sup>7</sup> / <sub>8</sub>	33	39	51 <sup>5</sup> / <sub>8</sub>
Max. E	7 GA.	7 GA.	7 GA.	7 GA.	7 GA.	7 GA.	7 GA.	3/8 GA.
F	22	25	25	31	31	34	34	42
Max.G	12 GA.	12 GA.	12 GA.	10 GA.	10 GA.	10 GA.	10 GA.	10 GA.
J	5 <sup>1</sup> / <sub>16</sub> X 5 <sup>1</sup> / <sub>8</sub>	5 <sup>1</sup> / <sub>16</sub> X 5 <sup>1</sup> / <sub>8</sub>	5 <sup>1</sup> / <sub>16</sub> X 5 <sup>1</sup> / <sub>8</sub>	7 <sup>1</sup> / <sub>16</sub> X 3 <sup>1</sup> / <sub>4</sub>	7 <sup>1</sup> / <sub>16</sub> X 3 <sup>1</sup> / <sub>4</sub>	7 <sup>1</sup> / <sub>16</sub> X 3 <sup>1</sup> / <sub>4</sub>	7 <sup>1</sup> / <sub>16</sub> X 3 <sup>1</sup> / <sub>4</sub>	7 <sup>1</sup> / <sub>16</sub> X 3 <sup>1</sup> / <sub>4</sub>
K	6	6	6	6	6	6	6	12
M	24 <sup>5</sup> / <sub>8</sub>	30 <sup>1</sup> / <sub>8</sub>	31 <sup>1</sup> / <sub>8</sub>	39 <sup>7</sup> / <sub>8</sub>	41 <sup>7</sup> / <sub>8</sub>	43 <sup>1</sup> / <sub>4</sub>	47 <sup>1</sup> / <sub>4</sub>	60 <sup>3</sup> / <sub>4</sub>
Max. Mtr. Frame	145T	182T	213T	215T	215T	215T	215T	215T

NOTE: Dimensions and specifications are subject to change. Certified prints are available.





## Vaneaxial Blower (Belt Drive), Type VA



**Series 54-G**

- In stock models ship in 5 days or less.
- Impellers are 7-bladed, airfoil design of cast aluminum construction. Large hub-to-blade ratio prevents back flow of air. Moves large volumes of air at high static pressures.
- Bearings are heavy-duty, ball or roller type selected for minimum L-50 life of 200,000 hours and include extended lubrication fittings.
- Housings are one-piece, heavy gauge hot rolled steel with internal discharge vanes welded in the blower housing.
- Extended lube tubes with compatible relubricable motor.
- Stocked as "G" (General Industrial) Duty Construction.
- See page 20 for accessories available from stock.
- For complete Certified Ratings Data, go to [www.hartzellairmovement.com](http://www.hartzellairmovement.com).



Hartzell Air Movement certifies that the Series 54, Belt Drive Vaneaxial, VA fan shown herein is licensed to bear the AMCA Seal for air and sound. The ratings shown are based on tests and procedures performed in accordance with AMCA Publication 211 and Publication 311 and comply with the requirements of the AMCA Certified Ratings Program.

Sound performance data is available upon request. Please contact the factory and ask for Engineering Publication #SD-157.

**Rating Table – Series 54, Type VA, G Duty**

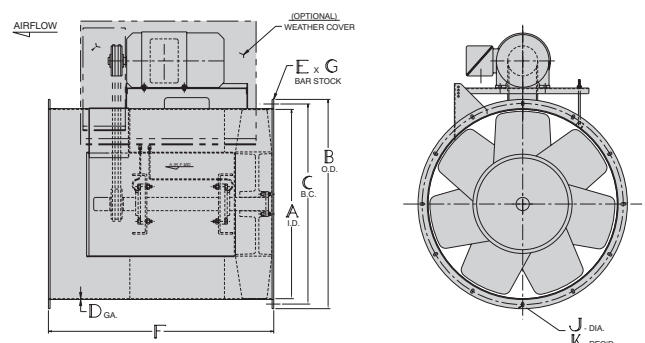
Size	Model	Motor		Phase	Fan RPM Range	CFM @ Static Pressure				Approximate dBA @ 5'	Ship. Wgt. Less Motor and Acc.
		HP	RPM			0"	1"	2"	3"		
14	S54-G-147VA---ST----	.25 - .75	1750	3	1900 - 2500	1820 - 2390	0 - 1750	-	-	67 - 74	100
14	S54-G-147VA---ST----	.75 - 5	3450	3	2500 - 4600	2390 - 4380	1750 - 4050	0 - 3500	0 - 3450	74 - 89	100
18	S54-G-187VA---ST----	.5 - 3	1750	3	1500 - 2500	3560 - 5930	0 - 5200	0 - 4250	-	73 - 86	180
18	S54-G-187VA---ST----	3 - 10	3450	3	2500 - 3700	5930 - 8720	5250 - 8350	4250 - 7900	0 - 7000	86 - 95	180
21	S54-G-217VA---ST----	.75 - 5	1750	3	1275 - 2500	4940 - 9680	3050 - 8950	0 - 8100	0 - 7200	66 - 75	230
21	S54-G-217VA---ST----	7.5 - 15	3450	3	2500 - 3125	9680 - 12100	8950 - 11500	8100 - 11000	7200 - 10200	83 - 89	230
26	S54-G-267VA---ST----	1 - 7.5	1750	3	1025 - 1925	7400 - 13900	0 - 12900	0 - 11500	0 - 10000	72 - 88	340
29	S54-G-297VA---ST----	1.5 - 10	1750	3	925 - 1800	9450 - 18390	6250 - 17300	0 - 16000	0 - 13700	72 - 89	460
36	S54-G-367VA---ST----	2 - 15	1750	3	750 - 1450	14700 - 28300	10100 - 26300	0 - 24000	0 - 22000	72 - 88	680
42	S54-G-427VA---ST----	15 - 30	1750	3	950 - 1550	29600 - 46700	26000 - 44000	21700 - 42000	0 - 39000	83 - 95	900

- Performance certified is for belt drive fans, Installation Type D: Ducted Inlet/Ducted Outlet.
- Power ratings (BHP) include transmission losses.
- Performance ratings do not include the effects of appurtenances (accessories).

**Principal Dimensions – Series 54, G Duty**

Fan Size	14	18	21	26	29	36	42
A	14	18	21	26	29	36	42
B	16 <sup>3</sup> / <sub>4</sub>	21 <sup>1</sup> / <sub>4</sub>	24 <sup>1</sup> / <sub>4</sub>	30 <sup>5</sup> / <sub>16</sub>	33 <sup>5</sup> / <sub>16</sub>	40 <sup>5</sup> / <sub>16</sub>	46 <sup>5</sup> / <sub>16</sub>
C	15 <sup>1</sup> / <sub>2</sub>	19 <sup>3</sup> / <sub>4</sub>	22 <sup>3</sup> / <sub>4</sub>	28	31	38	44 <sup>3</sup> / <sub>8</sub>
D	12	12	12	10	10	10	10
E	1 <sup>1</sup> / <sub>4</sub>	1 <sup>1</sup> / <sub>4</sub>	1 <sup>1</sup> / <sub>4</sub>	1 <sup>1</sup> / <sub>4</sub>	3 <sup>3</sup> / <sub>8</sub>	3 <sup>3</sup> / <sub>8</sub>	3 <sup>3</sup> / <sub>8</sub>
F	23	29	31	32	36	42	50
G	1 <sup>1</sup> / <sub>4</sub>	1 <sup>1</sup> / <sub>2</sub>	1 <sup>1</sup> / <sub>2</sub>	2	2	2	2
J	5 <sup>5</sup> / <sub>16</sub>	7 <sup>7</sup> / <sub>16</sub> X 13 <sup>13</sup> / <sub>16</sub>	7 <sup>7</sup> / <sub>16</sub> X 13 <sup>13</sup> / <sub>16</sub>	7 <sup>7</sup> / <sub>16</sub> X 13 <sup>13</sup> / <sub>16</sub>	7 <sup>7</sup> / <sub>16</sub> X 13 <sup>13</sup> / <sub>16</sub>	9 <sup>9</sup> / <sub>16</sub> X 13 <sup>13</sup> / <sub>16</sub>	9 <sup>9</sup> / <sub>16</sub> X 13 <sup>13</sup> / <sub>16</sub>
K	6	12	12	12	12	16	16
Max. Mtr. Frame	184T	215T	256T	256T	284T	286T	326T

NOTE: Dimensions and specifications are subject to change. Certified prints are available.





# Fixed Pitch Duct Fan



Series 38

- In stock models ship in 48 hours or less.
- 5 day shipment if accessories required.
- 6-blade "W" propeller - operates efficiently under pressure with low RPM and brake horsepower.
- Totally enclosed fan cooled motors.
- Motor leads extended to exterior of fan casing as standard.
- See page 20 for accessories available from stock.
- For complete information on Certified Ratings Data, go to [www.hartzellairmovement.com](http://www.hartzellairmovement.com).



Hartzell Air Movement certifies that the Series 38, Direct Drive Fixed Pitch Duct Fan, shown herein is licensed to bear the AMCA Seal for air performance. The ratings shown are based on tests and procedures performed in accordance with AMCA Publication 211 and comply with the requirements of the Certified Ratings Program.

The AMCA certified ratings seal applies to air performance ratings only.

Rating Table – Series 38

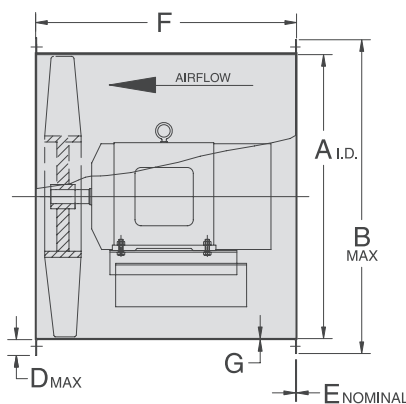
Size	Model	Motor		Phase	CFM @ Static Pressure			Approximate dBA @ 5'	Shipping Weight Less Motor and Accessories
		HP	RPM		0"	1/4"	1/2"		
20	S38---206-W---STFCH3	1	1750	3	5950	5050	2000	78	115
28	S38---286-W---STFCH4	1.5	1160	3	10600	8700	3600	79	178
40	S38---406-W---STFCK5	3	870	3	21600	18700	10200	79	315

- Performance certified is for Installation Type D: Ducted Inlet/Ducted Outlet.
- Power ratings (BHP) include transmission losses.
- Performance ratings do not include the effects of appurtenances (accessories).
- The dBA values shown above are based on Hartzell laboratory tests and are not indicative of actual installation values.
- Drives are variable pitch.

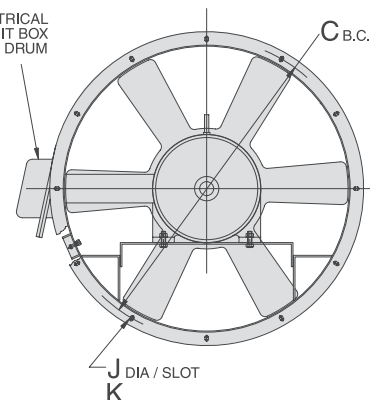
Principal Dimensions – Series 38

Fan Size	20	28	40
A	20 <sup>7</sup> / <sub>8</sub>	28 <sup>7</sup> / <sub>8</sub>	41
B	23 <sup>11</sup> / <sub>16</sub>	33 <sup>1</sup> / <sub>4</sub>	45 <sup>3</sup> / <sub>8</sub>
C	22 <sup>3</sup> / <sub>8</sub>	30 <sup>7</sup> / <sub>8</sub>	43 <sup>1</sup> / <sub>2</sub>
D	1 <sup>13</sup> / <sub>32</sub>	2 <sup>3</sup> / <sub>16</sub>	2 <sup>3</sup> / <sub>16</sub>
E	7 GA	7 GA	3 <sup>3</sup> / <sub>8</sub>
F	31	31	42
G	12 GA	10 GA	10 GA
J	15 <sup>1</sup> / <sub>16</sub> X 5 <sup>5</sup> / <sub>8</sub>	7 <sup>7</sup> / <sub>16</sub> X 3 <sup>3</sup> / <sub>4</sub>	7 <sup>7</sup> / <sub>16</sub> X 3 <sup>3</sup> / <sub>4</sub>
K	6	6	12

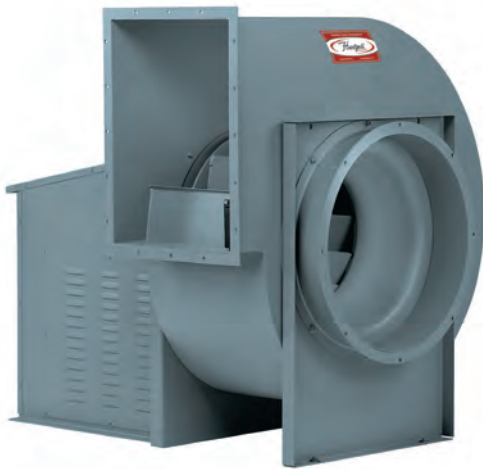
NOTE: Dimensions and specifications are subject to change.  
Certified prints are available.



EXTENDED ELECTRICAL LEADS W/ CONDUIT BOX ON EXTERIOR OF DRUM



## Backward Curved Centrifugal Fans Packaged (Belt Drive)



**Series 03P  
Class II Construction**

- In stock models ship in 5 days or less with accessories.
- Clockwise rotation (CCW not available from stock) with top horizontal discharge standard. Rotatable in field. Stock fans cannot be rotated to BAD, TAD, and DB. (Flanges interfere with base.)
- Class II construction. Housing of heavy gauge hot rolled steel.
- Wheels are non-overloading backward curved, with single thickness airfoil blades.
- Fans are stocked with shafts and bearings to accommodate maximum performance as shown.
- Weather cover, drilled inlet and outlet flanges (1-1/2" wide), and ceramic shaft seal to minimize leakage standard.
- Maximum temperature is 250°F.
- See page 20 for information about accessories available from stock.
- For complete information on Certified Ratings Data, go to [www.hartzellairmovement.com](http://www.hartzellairmovement.com).



Hartzell Air Movement certifies that the Backward Curved Centrifugal Fan, Packaged, Series 03P Class II Construction, shown herein, is licensed to bear the AMCA Seal for air and sound. The ratings shown are based on tests and procedures performed in accordance with AMCA Publication 211 and AMCA Publication 311 and comply with the requirements of the AMCA Certified Ratings Program.

Sound performance data is available upon request. Please contact the factory and ask for Engineering Publication #SD-147.

**Rating Table – Series 03P**

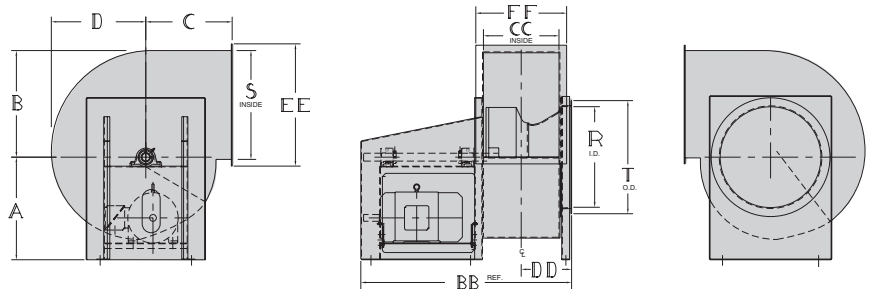
Size	Model	Max BHP	Max Motor Frame	Fan RPM Range	CFM @ Static Pressure					Shipping Weight Less Motor and Accessories
					2	4	6	8	10	
12	S03P0-122BC100ST----	10	215T	1625 - 3650	775-3825	1050-3575	1300-3225	1475-2875	1650-2250	249
15	S03P0-152BC100ST----	10	215T	3225 - 4425	1225-6450	1775-5900	2200-5200	2475-4375	2750-3300	295
18	S03P0-182BC100ST----	15	254T	1350 - 2975	1775-9125	2575-8325	2975-7550	3375-6550	2775-4750	403
22	S03P0-222BC100ST----	20	256T	2425 - 3725	2675-13650	3850-12475	4450-11275	5050-9800	5650-7125	546
24	S03P0-242BC100ST----	20	256T	1100 - 2875	3175-16175	4575-15125	5625-13000	6325-10900	7025-8075	631
27	S03P0-272BC100ST----	30	286T	750 - 2325	3975-20350	5750-19025	7075-16825	7975-14150	8850-10175	845

- Performance certified is for Installation Type D: Ducted Inlet/Ducted Outlet.
- Power ratings (BHP) do not include transmission losses.
- Performance ratings do not include the effects of appurtenances (accessories).

**Principal Dimensions – Series 03P**

Fan Size	12	15	18	22	24	27
A	17	17	20	24 <sup>3</sup> / <sub>4</sub>	27	28 <sup>1</sup> / <sub>2</sub>
B	13 <sup>9</sup> / <sub>16</sub>	16 <sup>11</sup> / <sub>16</sub>	20	24 <sup>7</sup> / <sub>16</sub>	26 <sup>5</sup> / <sub>8</sub>	29 <sup>13</sup> / <sub>16</sub>
C	14 <sup>1</sup> / <sub>4</sub>	16 <sup>9</sup> / <sub>16</sub>	18 <sup>7</sup> / <sub>8</sub>	22	23 <sup>9</sup> / <sub>16</sub>	25 <sup>3</sup> / <sub>4</sub>
D	11 <sup>3</sup> / <sub>4</sub>	14 <sup>3</sup> / <sub>4</sub>	17 <sup>11</sup> / <sub>16</sub>	21 <sup>5</sup> / <sub>8</sub>	23 <sup>1</sup> / <sub>2</sub>	26 <sup>3</sup> / <sub>8</sub>
R	12 <sup>11</sup> / <sub>16</sub>	15 <sup>15</sup> / <sub>16</sub>	19 <sup>3</sup> / <sub>16</sub>	23 <sup>15</sup> / <sub>32</sub>	25 <sup>17</sup> / <sub>32</sub>	28 <sup>21</sup> / <sub>32</sub>
S	13 <sup>9</sup> / <sub>32</sub>	16 <sup>1</sup> / <sub>2</sub>	19 <sup>7</sup> / <sub>8</sub>	24 <sup>3</sup> / <sub>32</sub>	26 <sup>7</sup> / <sub>16</sub>	29 <sup>11</sup> / <sub>16</sub>
T	16 <sup>15</sup> / <sub>16</sub>	19 <sup>3</sup> / <sub>16</sub>	23 <sup>1</sup> / <sub>2</sub>	27 <sup>5</sup> / <sub>16</sub>	29 <sup>1</sup> / <sub>8</sub>	32
BB	40 <sup>3</sup> / <sub>4</sub>	43 <sup>1</sup> / <sub>8</sub>	50 <sup>1</sup> / <sub>4</sub>	53 <sup>7</sup> / <sub>16</sub>	55	61 <sup>13</sup> / <sub>16</sub>
CC	9 <sup>1</sup> / <sub>2</sub>	11 <sup>15</sup> / <sub>16</sub>	14 <sup>3</sup> / <sub>8</sub>	17 <sup>9</sup> / <sub>16</sub>	19 <sup>1</sup> / <sub>8</sub>	21 <sup>7</sup> / <sub>16</sub>
DD	11 <sup>1</sup> / <sub>8</sub>	12 <sup>5</sup> / <sub>16</sub>	13 <sup>9</sup> / <sub>16</sub>	15 <sup>9</sup> / <sub>32</sub>	16	17 <sup>3</sup> / <sub>16</sub>
EE	16 <sup>7</sup> / <sub>16</sub>	19 <sup>13</sup> / <sub>16</sub>	23 <sup>3</sup> / <sub>16</sub>	27 <sup>5</sup> / <sub>8</sub>	29 <sup>3</sup> / <sub>4</sub>	32 <sup>15</sup> / <sub>16</sub>
FF	12 <sup>13</sup> / <sub>16</sub>	15 <sup>1</sup> / <sub>4</sub>	17 <sup>11</sup> / <sub>16</sub>	20 <sup>7</sup> / <sub>8</sub>	22 <sup>7</sup> / <sub>16</sub>	24 <sup>3</sup> / <sub>4</sub>

NOTE: Dimensions and specifications are subject to change.  
Certified prints available.





# Fiberglass Belt Drive Duct Fan



Series 34

- In stock models ship in 5 days or less.
- Excellent in corrosive atmospheres – temperatures up to 200°F.
- Weighs 25% less than comparable carbon steel equipment.
- Six-bladed fiberglass airfoil-type propeller provides maximum efficiency at medium pressure ranges with low speeds and low noise characteristics.
- See page 20 for accessories available from stock.
- For complete information on Certified Ratings Data, go to [www.hartzellairmovement.com](http://www.hartzellairmovement.com).



Hartzell Air Movement certifies that the Series 34 Fiberglass Belt Drive Duct Fan shown herein is licensed to bear the AMCA Seal. The ratings shown are based on tests and procedures performed in accordance with AMCA Publication 211 and comply with the requirements of the Certified Ratings Program.

The AMCA certified ratings seal applies to air performance ratings only.

Rating Table – Series 34

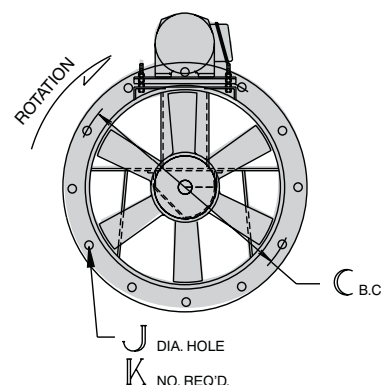
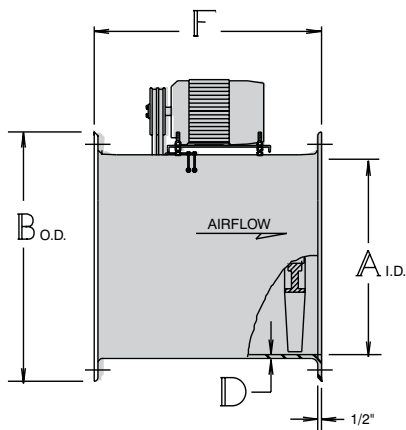
Size	Model	Motor		Phase	Fan RPM Range	CFM @ Static Pressure		Approximate dBA @ 5'	Shipping Weight Less Motor and Accessories
		HP	RPM			0"	1/4"		
12	S34---126FW---FG----	.25 - .5	1750	3	1650 - 2825	1150 - 1825	550 - 1625	74 - 88	90
16	S34---166FW---FG----	.5 - 1	1750	3	1650 - 2500	2650 - 4000	2175 - 3800	78 - 92	100
18	S34---186FW---FG----	.25 - 1	1750	3	900 - 1950	900 - 4600	600 - 4250	63 - 83	125
24	S34---246FW---FG----	1 - 3	1750	3	975 - 1875	5250 - 9900	3000 - 9400	73 - 90	170
28	S34---286FW---FG----	1 - 3	1750	3	850 - 1500	7400 - 1300	5500 - 12250	69 - 85	200
36	S34---366FW---FG----	3 - 7.5	1750	3	800 - 1325	15000 - 24600	13100 - 23750	79 - 92	325

- Performance certified is for Installation Type D: Ducted Inlet/Ducted Outlet.
- Power ratings (BHP) include transmission losses.
- Performance ratings do not include the effects of appurtenances (accessories).
- The dBA values shown above are based on Hartzell laboratory tests and are not indicative of actual installation values.
- Drives are variable pitch. RPM shown is for listed performance.

Principal Dimensions – Series 34

Fan Size	12	16	18	24	28	36
A	12 <sup>7</sup> / <sub>8</sub>	16 <sup>7</sup> / <sub>8</sub>	18 <sup>7</sup> / <sub>8</sub>	24 <sup>7</sup> / <sub>8</sub>	28 <sup>7</sup> / <sub>8</sub>	37
B	16 <sup>1</sup> / <sub>4</sub>	20	22 <sup>1</sup> / <sub>8</sub>	28 <sup>1</sup> / <sub>2</sub>	32 <sup>3</sup> / <sub>8</sub>	40 <sup>5</sup> / <sub>8</sub>
C	14 <sup>1</sup> / <sub>2</sub>	18 <sup>1</sup> / <sub>2</sub>	20 <sup>1</sup> / <sub>2</sub>	26 <sup>5</sup> / <sub>8</sub>	30 <sup>5</sup> / <sub>8</sub>	38 <sup>7</sup> / <sub>8</sub>
D	3 <sup>3</sup> / <sub>16</sub>	3 <sup>3</sup> / <sub>16</sub>	1 <sup>1</sup> / <sub>4</sub>	1 <sup>1</sup> / <sub>4</sub>	1 <sup>1</sup> / <sub>4</sub>	1 <sup>1</sup> / <sub>4</sub>
F	20	21	22	25	25	28
J	5 <sup>5</sup> / <sub>16</sub>	5 <sup>5</sup> / <sub>16</sub>	5 <sup>5</sup> / <sub>16</sub>	7 <sup>7</sup> / <sub>16</sub>	7 <sup>7</sup> / <sub>16</sub>	7 <sup>7</sup> / <sub>16</sub>
K	6	6	6	6	6	6

NOTE: Dimensions and specifications are subject to change. Certified prints are available.





## Fiberglass Duct Axial® Fan (Belt Drive)



**Series 35**

- In stock models ship in 5 days or less.
- Excellent in corrosive atmospheres – temperatures up to 200°F.
- Weighs 25% less than comparable carbon steel equipment.
- Six-bladed fiberglass airfoil-type propeller provides maximum efficiency at medium pressure ranges with low speeds and low noise characteristics.
- See page 20 for accessories available from stock.
- For complete information on Certified Ratings Data, go to [www.hartzellairmovement.com](http://www.hartzellairmovement.com).



Hartzell Air Movement certifies that the Series 35 Fiberglass Belt Drive Duct Axial Fan shown herein is licensed to bear the AMCA Seal. The ratings shown are based on tests and procedures performed in accordance with AMCA Publication 211 and comply with the requirements of the Certified Ratings Program.

The AMCA certified ratings seal applies to air performance ratings only.

**Rating Table – Series 35**

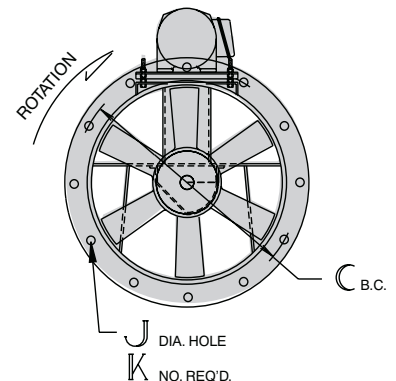
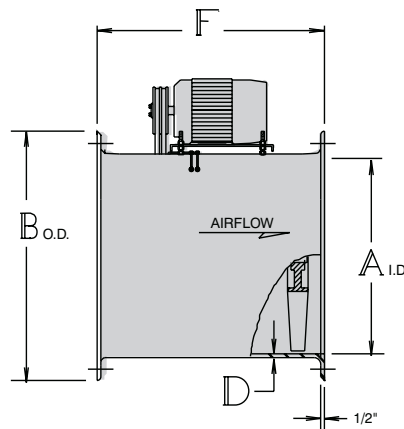
Size	Model	Motor		Phase	Fan RPM Range	CFM @ Static Pressure			Approximate dBA @ 5'	Shipping Weight Less Motor and Accessories
		HP	RPM			3/4"	1"	1 1/2"		
12	S35---126-E---FG----	.25 - 1.5	1750	3	1650 - 3350	0 - 1700	0 - 1400	0 - 900	67 - 86	90
12	S35---126-E---FG----	1.5 - 2	3450	3	2650 - 3650	950 - 1900	680 - 1700	390 - 1100	80 - 88	90
16	S35---166-E---FG----	.5 - 2	1750	3	1100 - 2975	0 - 4200	0 - 4000	0 - 3600	68 - 94	100
16	S35---166-E---FG----	2 - 3	3450	3	2150 - 2975	2700 - 3200	1750 - 2800	1200 - 1750	86 - 89	100
18	S35---186-E---FG----	.33 - 3	1750	3	1100 - 3025	0 - 6000	0 - 5750	0 - 5250	71 - 99	125
24	S35---246-E---FG----	.75 - 7.5	1750	3	750 - 2650	1325 - 11600	0 - 11300	0 - 10800	70 - 98	170
28	S35---286-E---FG----	1 - 10	1750	3	650 - 2125	0 - 16200	0 - 15900	0 - 15000	65 - 96	200
36	S35---366-E---FG----	1.5 - 10	1750	3	600 - 1700	2000 - 26400	600 - 25500	0 - 24000	71 - 99	325

- Performance certified is for Installation Type D: Ducted Inlet/Ducted Outlet.
- Power ratings (BHP) include transmission losses.
- Performance ratings do not include the effects of appurtenances (accessories).
- The dBA values shown above are based on Hartzell laboratory tests and are not indicative of actual installation values.
- Drives are variable pitch.

**Principal Dimensions – Series 35**

Fan Size	12	16	18	24	28	36
A	12 <sup>7</sup> / <sub>8</sub>	16 <sup>7</sup> / <sub>8</sub>	18 <sup>7</sup> / <sub>8</sub>	24 <sup>7</sup> / <sub>8</sub>	28 <sup>7</sup> / <sub>8</sub>	37
B	16 <sup>1</sup> / <sub>4</sub>	20	22 <sup>1</sup> / <sub>8</sub>	28 <sup>1</sup> / <sub>2</sub>	32 <sup>3</sup> / <sub>8</sub>	40 <sup>5</sup> / <sub>8</sub>
C	14 <sup>1</sup> / <sub>2</sub>	18 <sup>1</sup> / <sub>2</sub>	20 <sup>1</sup> / <sub>2</sub>	26 <sup>5</sup> / <sub>8</sub>	30 <sup>5</sup> / <sub>8</sub>	38 <sup>7</sup> / <sub>8</sub>
D	3 <sup>3</sup> / <sub>16</sub>	3 <sup>3</sup> / <sub>16</sub>	1 <sup>1</sup> / <sub>4</sub>	1 <sup>1</sup> / <sub>4</sub>	1 <sup>1</sup> / <sub>4</sub>	1 <sup>1</sup> / <sub>4</sub>
F	20	21	22	25	25	28
J	5 <sup>5</sup> / <sub>16</sub>	5 <sup>5</sup> / <sub>16</sub>	5 <sup>5</sup> / <sub>16</sub>	7 <sup>7</sup> / <sub>16</sub>	7 <sup>7</sup> / <sub>16</sub>	7 <sup>7</sup> / <sub>16</sub>
K	6	6	6	6	6	6

NOTE: Dimensions and specifications are subject to change. Certified prints are available.







# Fiberglass Backward Curved Centrifugal Fan, Packaged (Belt Drive)



**Series 41P**  
**Class II Construction**

- 5 days or less shipment for in-stock models with stock motor and drives mounted.
- Clockwise rotation (CCW not available from stock) with top horizontal discharge standard. Rotatable scroll. Stock fans cannot be rotated to BAD, TAD and DB. (Flanges interfere with base.)
- Class II construction.
- Offers non-overloading efficiency and economy in corrosive atmospheres up to 10" W.G. Temperatures to 250°F.
- Wheel is one-piece airfoil type, constructed with vinylester resin. Housing constructed of special corrosive resistant polyester resin plus flame retardant additives, reducing the flame spread rate below 25. Base is hot rolled steel, epoxy coated.
- Internal hardware is 304 stainless steel encapsulated with fiberglass. Shaft is 304 stainless steel.
- Flanged outlet and inlet flange are standard.
- Epoxy coated weather cover is standard.
- See page 20 for accessories available from stock.
- For complete information on Certified Ratings Data, go to [www.hartzellairmovement.com](http://www.hartzellairmovement.com).



**Featuring Fiberglass Backward Curved Wheel Type FA**  
**Wheel 100% Width**



Hartzell Air Movement certifies that the Series 41P, Fiberglass Backward Curved Centrifugal Fan, Packaged, shown herein is licensed to bear the AMCA Seal for sound and air performance. Ratings are based on tests and procedures performed in accordance with AMCA Publication 211 and Publication 311 and comply with the requirements of the AMCA Certified Ratings Program.

Sound performance data is available upon request. Please contact the factory and ask for Engineering Publication #SD-157.

## Rating Table – Series 41P

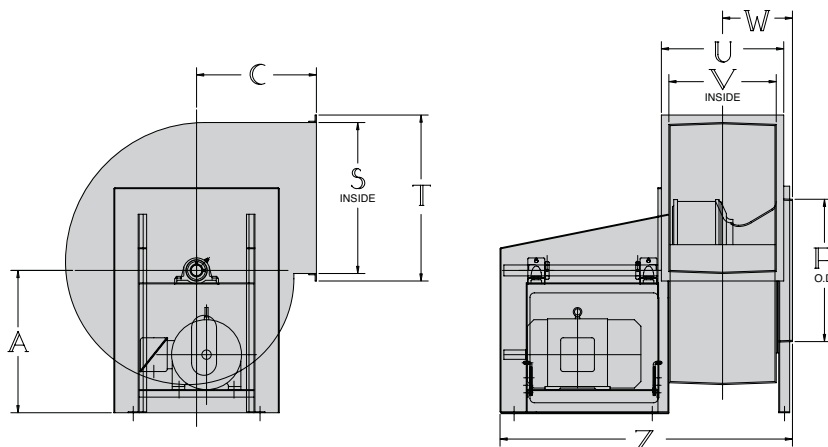
Fan Size	Model	Max BHP	Max. Motor Frame	Fan RPM Range	CFM @ Static Pressure					Shipping Weight Less Motor and Accessories
					2"	4"	6"	8"	10"	
12	S41P0-122FA100FG----	10	215T	1475-4400	800-3400	1100-3000	1300-2700	1500-2300	1600-1800	188
15	S41P0-152FA100FG----	10	215T	1175-3600	1150-5625	1600-5025	1900-4450	2200-3850	2500-3100	215
18	S41P0-182FA100FG----	15	254T	1010-2993	1800-8025	2400-7225	2800-6425	3200-5625	3600-4625	309

- Performance certified is for Installation Type D: Ducted Inlet/Ducted Outlet.
- Power ratings (BHP) do not include transmission losses.

## Principal Dimensions – Series 41P

Fan Size	12	15	18
A	17	17	20
C	13	16 <sup>3</sup> / <sub>16</sub>	19
R	12 <sup>1</sup> / <sub>4</sub>	16 <sup>3</sup> / <sub>8</sub>	19 <sup>3</sup> / <sub>8</sub>
S	12 <sup>7</sup> / <sub>8</sub>	16 <sup>1</sup> / <sub>8</sub>	19 <sup>3</sup> / <sub>8</sub>
T	18 <sup>1</sup> / <sub>8</sub>	21 <sup>1</sup> / <sub>16</sub>	24 <sup>1</sup> / <sub>2</sub>
U	14 <sup>3</sup> / <sub>8</sub>	16 <sup>5</sup> / <sub>8</sub>	19 <sup>1</sup> / <sub>16</sub>
V	9 <sup>5</sup> / <sub>16</sub>	11 <sup>11</sup> / <sub>16</sub>	14
W	8 <sup>1</sup> / <sub>8</sub>	9 <sup>5</sup> / <sub>16</sub>	10 <sup>9</sup> / <sub>16</sub>
Z	37 <sup>5</sup> / <sub>8</sub>	40 <sup>1</sup> / <sub>8</sub>	47 <sup>1</sup> / <sub>16</sub>

NOTE: Dimensions and specifications are subject to change. Certified prints are available.



## Heating Equipment



**Series 78V**

### Vertical Gas Fired Make-up Air Heater

- In stock models ship in 48 hours or less.
- IRI pipetrain.
- 460 volt and natural gas only.
- Economical and energy efficient.
- Each unit is a complete air supply system in a self-contained package, consisting of a fan, burner, 3-place remote station and controls.
- Excellent for localized supply air applications.
- Industrial duty – constructed of painted 12-gauge hot rolled steel. The unit's propellers are #319 cast aluminum alloy.
- Low noise – all Series 78V units are at 83 dBA or less @ 5'.
- Units are direct drive, no belts to adjust or replace. Extended lube lines to the motors are standard.
- Series 78V vertical units are set up for roof curb mounting. Units are ready for connection to gas line and power source.
- Standard units have bird screen and filter racks, less filters.
- For complete information on Series 78V Make-Up Air Heaters, go to [www.hartzellairmovement.com](http://www.hartzellairmovement.com).

#### Rating Table – Series 78V

Model	BTU/HR	H.P.	Motor RPM	Basic Unit				Min. Inlet Gas Pressure	Approximate Shipping Weight
				0" Ext. SP		1/4" Ext. SP			
				CFM*	Temp Rise	CFM*	Temp Rise		
S78V--486AA---STFCL5	2,900,000	5	860	27300	98°F	22900	116°F	14"	2900 lbs

\*CFM shown is net flow at discharge and includes static pressure loss for burner, shutter and the intake roof hood.

NOTE: Static pressure for calculated resistances external to the unit assembly.



**Series 79 (Direct Drive)**

### Door Heaters

- In stock models ship in 48 hours or less.
- IRI/FM gas plumbing train.
- 460 volt only.
- Electronic flame safeguard with LED status.
- Magnetic starter.
- Rear inlet guard.
- Block & vent valves.
- High & low gas pressure switches.
- High temperature limit switch.
- Remote station for floor mounting with selector switch.
- Door switch for automatic start and stop of unit.
- For complete information on door heaters, go to [www.hartzellairmovement.com](http://www.hartzellairmovement.com).

#### Rating Table – Series 79

Model	Motor H.P.	Fan RPM	CFM	Input BTU	Temp. Rise	Min. Inlet Gas Pressure	Approximate Shipping Weight
S79---226DA---STFCI3	1½	1750	6,500	700,000	99°F	5"	350 lbs
	1½	1750	6,500	765,000	109°F	6"	
	1½	1750	6,500	820,000	117°F	7"	
S79---246DA---STFCJ3	2	1750	7,900	865,000	101°F	6"	400 lbs
	2	1750	7,900	930,000	109°F	7"	
	2	1750	7,900	930,000	116°F	8"	

# Marine Duty Duct Axial® Fan (Direct Drive)



Series 44-M – Type DA

- In stock models ship in 48 hours or less.
- 5 day shipment with 230V motor voltage.
- 6-blade airfoil design, cast aluminum propeller, mounted with taperlock bushing.
- Housings are one-piece, heavy gauge hot rolled steel with steel flanges.
- Standard finish is a marine duty inorganic zinc base coat applied to sand blasted steel housings and an epoxy coating applied to cast aluminum impellers. This provides excellent weathering characteristics and protection against sea spray.
- Motors are totally enclosed, certified to meet IEEE 45, 50°C ambient rise, below deck, 230/460/60/3. Fractional HP motors equipped with permanently lubricated, non-regreasable bearings. Integral HP motors equipped with relubricable bearings as standard. 12", ¾ HP fan available in single phase 115 volt.
- Motors are pre-wired 460V with electrical leads extended to watertight conduit boxes located on the exterior of the fan housings. 230V available with mod fee applied.
- Blowers are designed for mounting in any position from horizontal to vertical.
- Contact factory if accessories required.
- For complete information on Certified Ratings Data, go to [www.hartzellairmovement.com](http://www.hartzellairmovement.com).



Hartzell Air Movement certifies that the Series 44-M, Marine Duty Duct Axial®, Direct Drive Fans shown herein are licensed to bear the AMCA Seal. The ratings shown are based on tests and procedures performed in accordance with AMCA Publication 211 and comply with the requirements of the AMCA Certified Ratings Program.



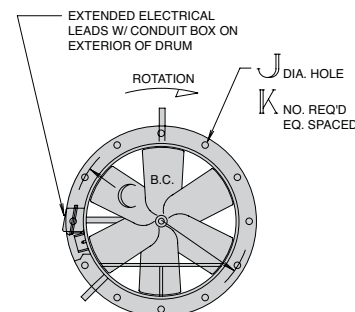
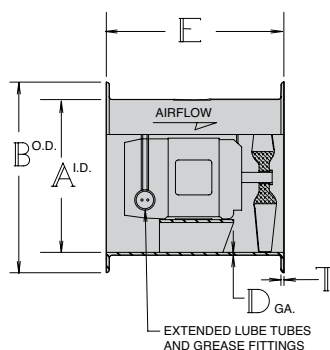
Hartzell Air Movement certifies that Marine Duty Duct Axial® Fan, Series 44-M, shown herein, is authorized to bear CE Marking in accordance with Machinery Safety Directive 98/37/EC of the European Union. Reference Technical File E.S. 13.2.2.

Rating Table – Series 44-M

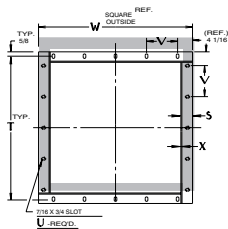
Size	Model	Motor		Phase	Max Flow (CFM)	Approximate Shipping Weight
		HP	RPM			
12	S44-M-126DA---STFIGB	¾	3450	1	2308	105
12	S44-M-126DA---STFIG2	¾	3450	3	2308	105
16	S44-M-166DA---STFIK2	3	3450	3	5747	154
18	S44-M-186DA---STFIL2	5	3450	3	8037	229
24	S44-M-246DA---STFIK3	3	1750	3	9072	349
28	S44-M-286DA---STFIL3	5	1750	3	14559	457
32	S44-M-326DA---STFIN3	10	1750	3	21690	669
36	S44-M-366DA---STFIP3	20	1750	3	30250	859

Principal Dimensions – Series 44-M

Fan Size	12	16	18	24	28	32	36
A	12 <sup>7</sup> / <sub>8</sub>	16 <sup>7</sup> / <sub>8</sub>	18 <sup>7</sup> / <sub>8</sub>	24 <sup>7</sup> / <sub>8</sub>	28 <sup>7</sup> / <sub>8</sub>	33	37
B	16 <sup>7</sup> / <sub>16</sub>	20 <sup>7</sup> / <sub>16</sub>	22 <sup>7</sup> / <sub>16</sub>	29 <sup>7</sup> / <sub>16</sub>	33 <sup>7</sup> / <sub>16</sub>	37 <sup>7</sup> / <sub>16</sub>	41 <sup>7</sup> / <sub>16</sub>
C	15 <sup>1</sup> / <sub>8</sub>	19 <sup>1</sup> / <sub>8</sub>	21 <sup>1</sup> / <sub>8</sub>	27 <sup>5</sup> / <sub>8</sub>	31 <sup>5</sup> / <sub>8</sub>	35 <sup>3</sup> / <sub>4</sub>	39 <sup>3</sup> / <sub>4</sub>
D	1 <sup>1</sup> / <sub>4</sub>	1 <sup>1</sup> / <sub>4</sub>	1 <sup>1</sup> / <sub>4</sub>	1 <sup>1</sup> / <sub>4</sub>	1 <sup>1</sup> / <sub>4</sub>	1 <sup>1</sup> / <sub>4</sub>	1 <sup>1</sup> / <sub>4</sub>
E	15	15	15	23	23	24	28
J	9 <sup>9</sup> / <sub>16</sub>	9 <sup>9</sup> / <sub>16</sub>	9 <sup>9</sup> / <sub>16</sub>	9 <sup>9</sup> / <sub>16</sub>	9 <sup>9</sup> / <sub>16</sub>	9 <sup>9</sup> / <sub>16</sub>	9 <sup>9</sup> / <sub>16</sub>
K	12	12	12	12	12	12	12
T	1 <sup>1</sup> / <sub>4</sub>	1 <sup>1</sup> / <sub>4</sub>	1 <sup>1</sup> / <sub>4</sub>	1 <sup>1</sup> / <sub>4</sub>	1 <sup>1</sup> / <sub>4</sub>	1 <sup>1</sup> / <sub>4</sub>	1 <sup>1</sup> / <sub>4</sub>
Max Motor Frame	145T	184T	184T	184T	184T	215T	256T



\* Panel fans (Series 02S) can be supplied with an optional mounting flange around the panel to facilitate fan mounting to the wall opening. The optional shutter mounting boot is furnished with a mounting flange as standard. Both flanges have the same bolt pattern. See chart below.



Size	24	28	36	40	48
S	1½	1½	1½	1½	1½
T	29⅞	34⅞	43⅞	47⅞	55⅞
U	20	20	20	20	24
V	5¾	7	9¼	10¼	9¼
W	31⅞	36⅞	45⅞	49⅞	57⅞
X	¾	¾	¾	¾	¾

Size	24	28	36	40	48
Flange I.D.	24	28	36	40	48
Flange I.D.	27	31	39	43	51

## HartKool® Accessories



Makes the HartKool® a truly portable fan, ready to go where you need it most. Holds one fan (any size) or two 18" or 24" fans.



# Centrifugal Fan Accessories

## Drain Kit

Steel drain kit shipped loose for Series 03P stock fans and PVC drain kit shipped loose on Series 41P stock fans. Inlet and outlet guards available upon request.

## Inlet and Outlet Guards

Inlet guards are a steel spiral ring. Outlet guards are a square wire mesh. **This accessory is available on Series 03P.** Guards on Series 41P are epoxy coated.

# Roof Ventilator & Duct Fan Accessories (Steel and Fiberglass)

## Weather Cover

Designed to fit all belt drive duct and duct axial fans. Covers are vented. Steel construction. Specify horizontal or vertical mounting. **This accessory is available on Series 31, 46, and 54-G.** Weather cover on Series 34 and 35 fans are epoxy coated.

## Companion Flanges

Drilled to fit the flanges of the duct fan; allows easy installation. Available in steel or fiberglass construction. **This accessory is available on 31, 46, and 54-G.** Companion flanges on Series 34 and 35 are fiberglass.

## Mounting Feet

Bolted to the inlet and discharge flanges, mounting feet allow positioning of the duct axial fan on the floor, ceiling, wall or platform. Can be used with vibration isolators. **This accessory is available on Series 31, 38, 46, and 54-G.** Mounting feet on series 34 and 35 are epoxy coated.

## Birdscreen

Half-inch square opening, spiral guard, 19 ga. galvanized steel available. **Available on Series 61-G, 69, 31.**

## Disconnect Switch

Shipped loose for field mounting. **Available on all fans.**

## Filters

Throw-away or permanent filters. **Available on Series 16I.**

## Inlet and Outlet Guards

Spiral ring guard bolted on inlet or outlet. **This accessory is available on Series 31, 38, 46, and 54-G.** Guard on Series 34 and 35 fans are epoxy coated.

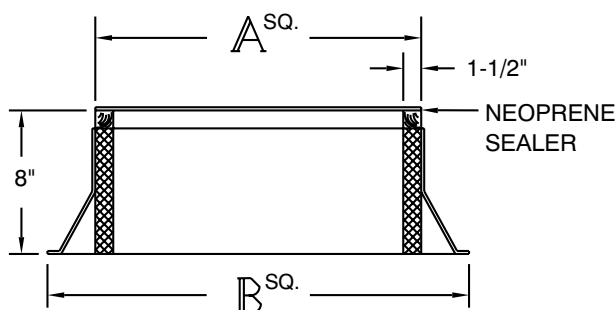
## Prefabricated Curb\*

The IRC-1 prefabricated curb is for flat roof installation of Hartzell roof ventilators. The curb is designed for metal, concrete or wood roof decks that are not surface insulated. 8" high.

Prefabricated curbs are designed to support the weight of the fans cataloged herein and attachments not exceeding over 100 additional pounds in a 40 mph wind. Non-standard curb construction is available.

**\*All prefab curbs will ship direct with supplier's standard delivery.**

**\*Fiberglass curbs are a 6 week lead time. Ask us about epoxy coated curbs to improve your lead time.**



**Principal Dimensions for Series 61, Series 69, and Series 16I**

Fan Size	24	30	36	40	42	44	48
A	35 <sup>3</sup> / <sub>4</sub>	41 <sup>1</sup> / <sub>4</sub>	47 <sup>3</sup> / <sub>4</sub>	49 <sup>3</sup> / <sub>4</sub>	53 <sup>3</sup> / <sub>4</sub>	53 <sup>3</sup> / <sub>4</sub>	59 <sup>3</sup> / <sub>4</sub>
B	43 <sup>3</sup> / <sub>4</sub>	49 <sup>3</sup> / <sub>4</sub>	55 <sup>3</sup> / <sub>4</sub>	57 <sup>3</sup> / <sub>4</sub>	61 <sup>3</sup> / <sub>4</sub>	61 <sup>3</sup> / <sub>4</sub>	67 <sup>3</sup> / <sub>4</sub>

See pages 6, 7, and 8 for sizes available for each series



## Key Markets

- Water and wastewater
- Marine
- Power Generation
- High Technology/Semiconductor
- Heavy Industry
- Oil and Gas
- Food Processing



## Unlimited Applications

- |  |                            |
|--|----------------------------|
| • Scrubber systems                                 | • Biogas/ Landfill exhaust |
| • Dust collection                                  | • Combustion air           |
| • Mining   | • Drying equipment         |
| • Ovens  | • Heat exchangers          |
| • Pollution control/<br>Wastewater treatment plant | • Pneumatic conveying      |
| • Painting/ Spray booths                           | • Fuel cells               |
| • Cryogenic air circulation                        | • Air circulation          |
| • Aircraft ground circulation                      | • Automotive               |





AIR MOVEMENT

## Don't see what you're looking for? Ask about our Express Build to Order.

**Most products can be built to order in 5 days or less.**

*To ensure complete customer satisfaction, all fans and blowers in Rapid Ship are fully assembled, test run, and electronically balanced before shipment.*

*Prefab curbs will ship direct from supplier with their normal delivery schedule.*

**Contact factory for availability. Call 1-800-336-3267 or email [HRS@hartzell.com](mailto:HRS@hartzell.com).**



---

## Safety Accessories, Application and Use Warning

The safe application and use of equipment supplied by Hartzell Air Movement is the responsibility of the installer, the user, the owner, and the employer. Since the application and use of its equipment can vary greatly, Hartzell Air Movement offers various product types, optional safety accessories, and sound performance data per laboratory tests. Hartzell Air Movement sells its equipment with and without safety accessories, and accordingly, it can supply such safety accessories only upon receipt of an order. The need for safety accessories will frequently depend upon the type of system, fan location and operating procedures being employed. The proper protective safety accessories to meet company standards, local codes, and the requirements of the Occupational Safety and Health Act must be determined by the user since safety requirements vary depending on the location and use of the equipment. If applicable local conditions, standards, codes or OSHA rules require the addition of the safety accessories, the user should specify and obtain the required safety accessories from Hartzell Air Movement and should not allow the operation of the equipment without them.

Owners, employers, users and installers should read "RECOMMENDED SAFETY PRACTICES FOR USERS AND INSTALLERS OF INDUSTRIAL AND COMMERCIAL FANS" published by the Air Movement and Control Association International, Inc., 30 West University Drive, Arlington Heights, Illinois 60004. A copy of this publication is enclosed with each fan shipped from Hartzell Air Movement, and is also available upon request at Hartzell's office in Piqua, Ohio 45356.

Please contact Hartzell Air Movement or your local Hartzell representative for more information on product types, safety accessories, and sound performance estimates.

Remember, the selection of safety accessories and the safe application and use of equipment supplied by Hartzell Air Movement is your responsibility.





# Rapid Ship

## Hartzell Air Movement Advantages

- **A lifetime of value**
  - Industrial fans are field proven, 100% tested, with virtually no warranty issues
  - Energy efficient designs that provide a lower total cost of ownership
- **Leadership in performance**
  - Products certified by AMCA that meet DOE recommended FEGs
  - Highly efficient industrial fan designs that are the quietest in the market
  - Airfoil shape wheels and props with industry leading measured efficiencies
  - Fiberglass products with a unique one piece wheel design that delivers consistent operational results
- **Advanced engineering and manufacturing**
  - Proven manufacturing techniques on state of the art equipment in ISO 9001:2008 manufacturing facilities
  - Engineering team utilizes the latest design tools in 3D CAD and other modeling software
  - Manufacturing
    - Powder coat paint system
    - Robotic welding
- **Creative design and manufacturing team**
  - Offering the greatest number of industrial fan design choices
  - Building products to meet your rigorous application instead of being limited to a catalog
    - Use of Hartzell-FLOW® fan selection software
    - FEA analysis capabilities
- **Trusted brand name**
  - Extensive talent pool bringing over 85 years of knowledge and experience to you

### Hartzell Air Movement

910 S. Downing Street  
Piqua, OH 45356  
937-773-7411  
1-800-336-FANS (3267)

[www.hartzellairmovement.com](http://www.hartzellairmovement.com)  
[HRS@Hartzell.com](mailto:HRS@Hartzell.com)

We Accept



**Quality • Value • Commitment**